

Case Profile

Natural Resources Energy Sector

Hydropower Plant



Contract Information

Start	June 2003
Value	\$1.7 billion
Duration	72 months

Collaboration Statistics

Total Uploads	42,103
Total Downloads	198,261
Organisations	50
Users	375
Drawings	8,831
Documents	26610
Tasks	617
Photos	1,418
Discussions	833
Statistics Date	January 2009

EPCC of 690MW Hydropower Plant

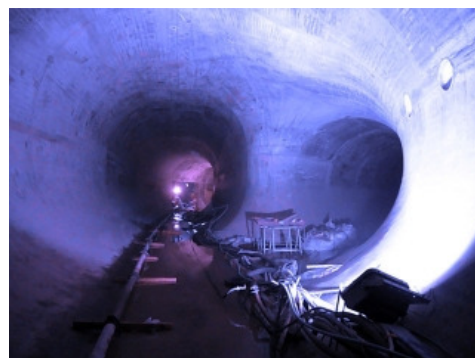
A 690MW 4600GWh/year hydroelectric the largest of which has a crest height of 193m and 8.5M m³ of fill. On completion this will be the highest of its kind in Europe and one of the highest in the world. The project also involves the construction of 72km of tunnels ranging from 4.0m to 9.0m diameter. The Powerhouse houses six Francis turbines, each with a rated output of 115MW. The project is scheduled for completion in 2009.



From project commencement to January 2009: 50 Organisations collaborated through 375 users across 10 countries - the UK, Iceland, USA, Norway, Germany, Italy, France, Switzerland, Sweden and Slovenia.

42,103 items have been uploaded and viewed 198,261 times - giving an upload to download ratio of 4.7 i.e. for every item uploaded it has been viewed 4.7 times and

therefore is a strong indicator of enhanced efficiency and savings being accrued.



833 discussions have been posted to date with a thread count (i.e., single postings to a discussion) of 2,200. 11,200 copies of the thread were issued to users effectively removing 11,200 e-mails from organisations' e-mail systems and ensuring full project auditability of e-mail dialog between the collaborating organisations.

As a result of the success of this project and the use of 4Projects® the Client has deployed a 4Projects® Extranet on its next major hydropower project in Iceland.

